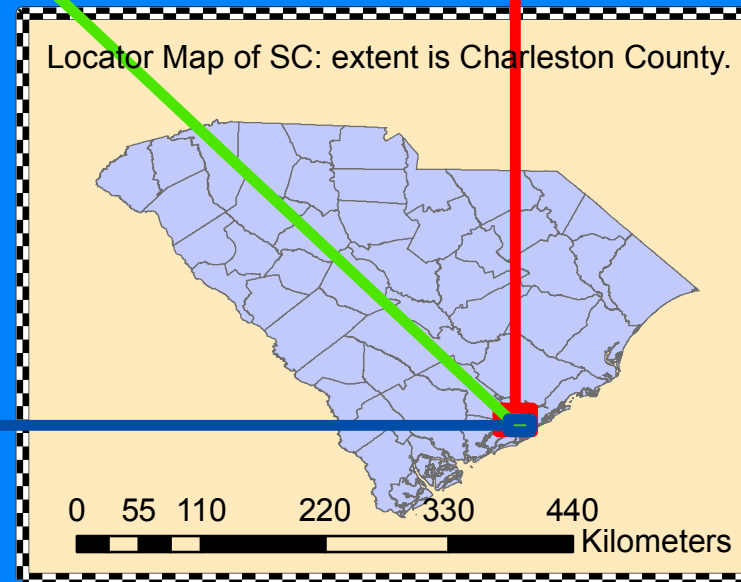
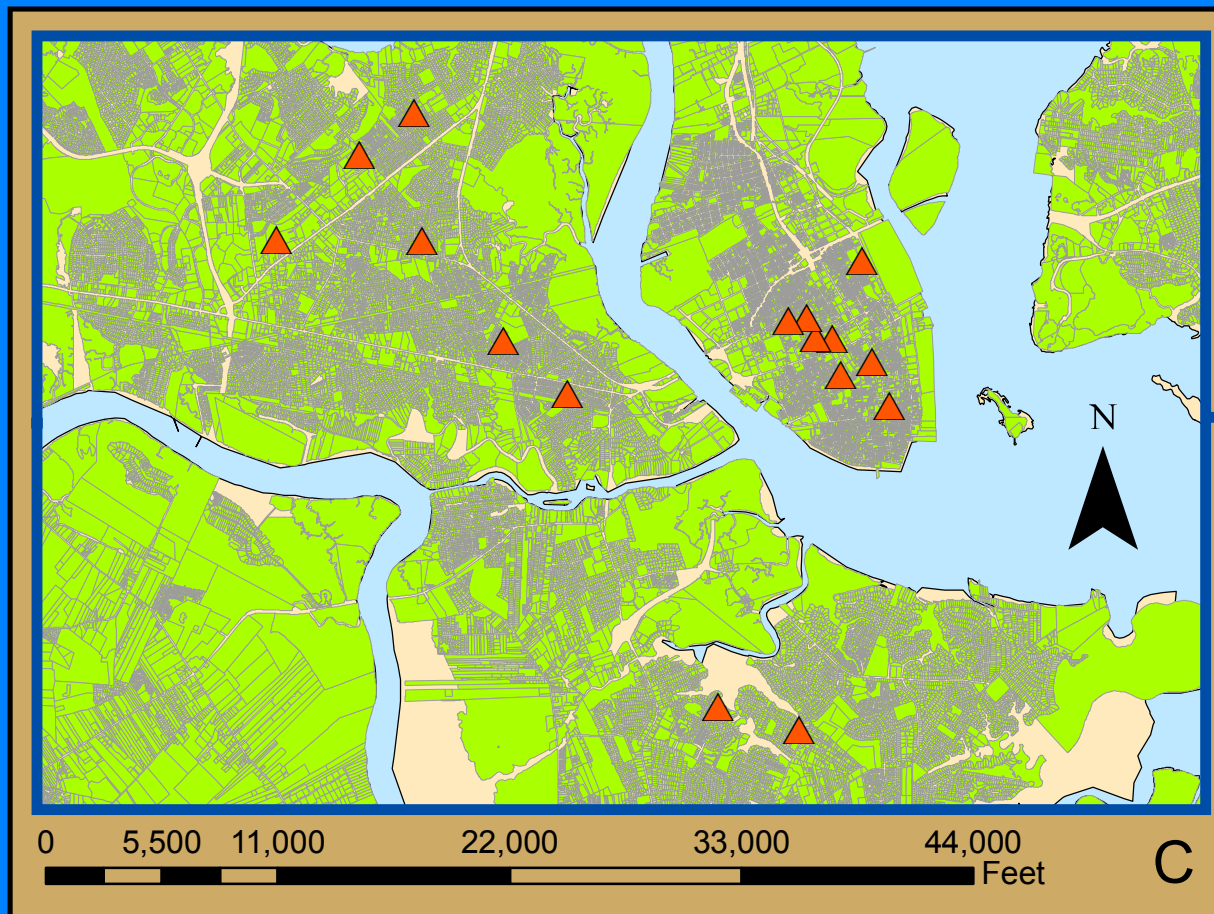
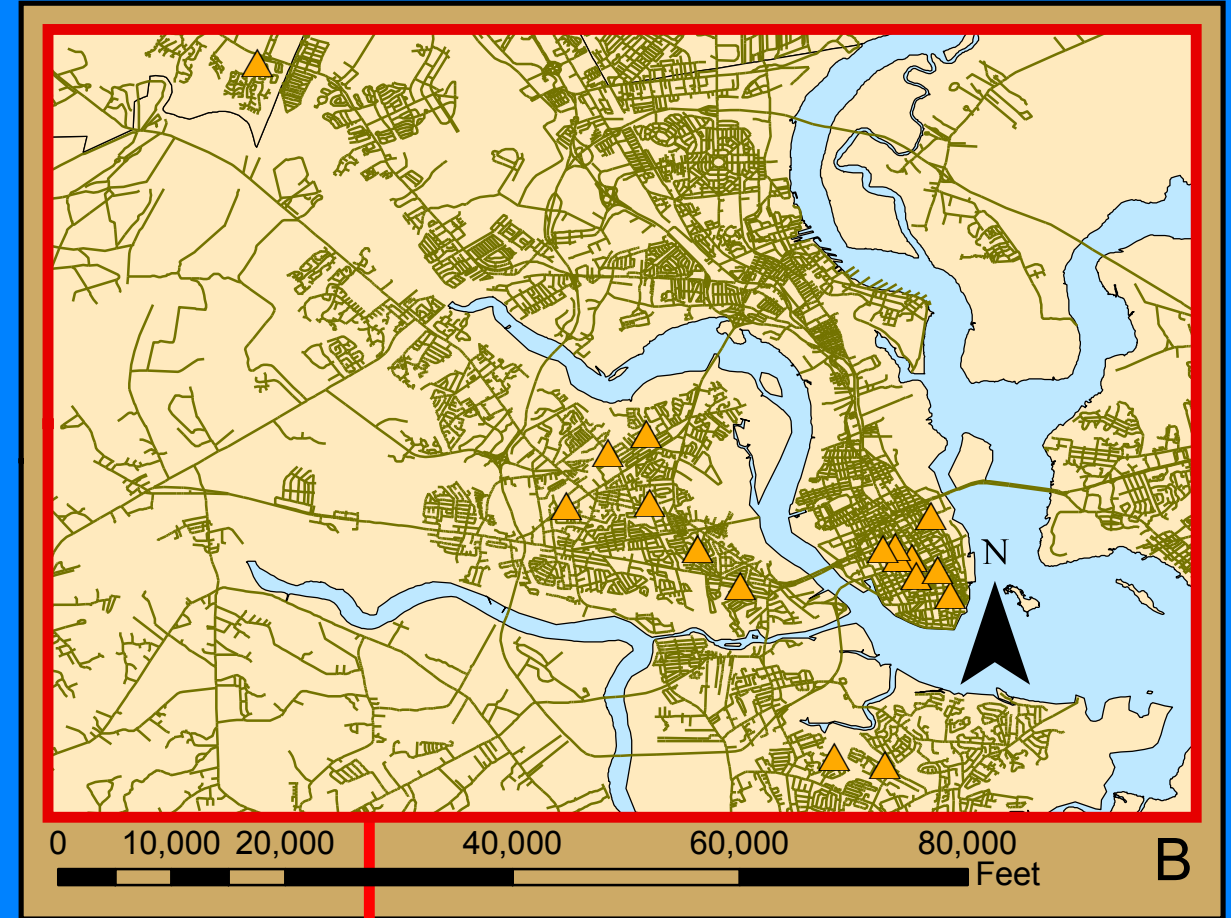
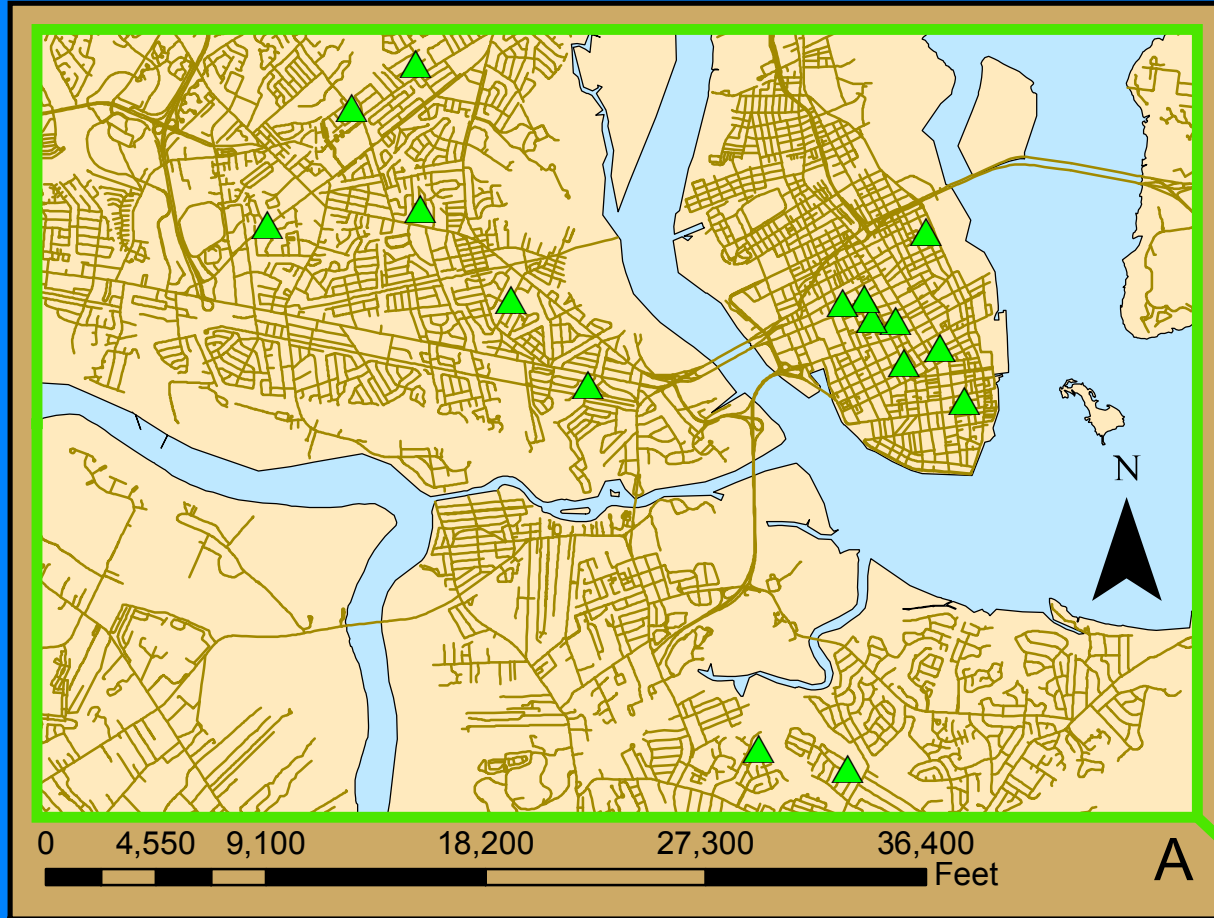


Geocoded Addresses of Spring 2011 GIS Class



Legend A - CC Streets

- ▲ Matched Class Addresses
- Charelston County Streets
- County Boundries

Legend B- US Streets

- ▲ Matched Class Addresses
- USA Streets
- County Boundries

Legend C - CC Parcels

- ▲ Matched Class Addresses
- newparcel1
- hz_county

These figures show geocoded addresses of the Spring 2011 GIS class in three different ways:

- A. is geocoded to Charleston Country streets. (3 unmatched addresses that were outside of Charleston County)
- B. is Geocoded to the USA Street map. (2 unmatched to US streets that were built after the data collection.)
- C. is Geocoded to the new parcel data for charleston county. (3 unmatched: 2 were outside Charleston County, 1 was connected to another address. 3 tied that had multiple locations for the same address.)